

EXPEDIENT FALLOUT SHELTER

TILT-UP DOORS AND EARTH

GENERAL INFORMATION

READ AND STUDY ALL INSTRUCTIONS BEFORE STARTING TO BUILD. THE LOCATION SELECTED FOR THIS SHELTER SHOULD BE LEVEL OR GENTLY SLOPING DOWN AND AWAY FROM THE MASONRY WALL. A THREE-PERSON SHELTER CAN BE CONSTRUCTED BY THREE PEOPLE WORKING A TOTAL OF 6 HOURS EACH.

STEP 1

LAY OUT THE TRENCH AND EARTH NOTCH WIDTHS, AS DIMENSIONED ON THE SECTION BELOW, ADJACENT TO A MASONRY WALL. DETERMINE THE LENGTH OF TRENCH AND NOTCH BY ALLOWING ONE DOOR WIDTH OF LENGTH PER PERSON TO BE SHELTERED.

STEP 2

EXCAVATE TRENCH AND EARTH NOTCH. PLACE EXCAVATED EARTH OUTSIDE SHELTER LIMITS FOR LATER USE.

STEP 3

REMOVE DOOR KNOBS FROM ALL DOORS. PLACE DOUBLE LAYER OF DOORS IN NOTCH AND AGAINST WALL AS SHOWN IN SKETCH. NAIL 1 1/2" x 8" BOARD TO DOOR EDGES AT ENTRANCE TO SERVE AS EARTH STOP. AFTER ATTACHING PLASTIC ENTRANCE COVER AS SHOWN, OR BUILD RETAINING WALL OF SANDBAGS IN LIEU OF BOARD. PLACE ONE DOOR ON EDGE LENGTHWISE AS THE END CLOSURE.

STEP 4

PLACE ONE END OF THE ROLLED UP WATERPROOFING MATERIAL UNDER THE TOP EDGE OF THE DOORS BEFORE EARTH FILL IS PLACED. BEGIN PLACEMENT OF EARTH FILL ON DOORS. COVER THE EARTH FILL WITH WATERPROOFING MATERIAL. SECURING IT WITH EARTH THAT TOP AND BOTTOM TO PREVENT IT FROM BLOWING AWAY.

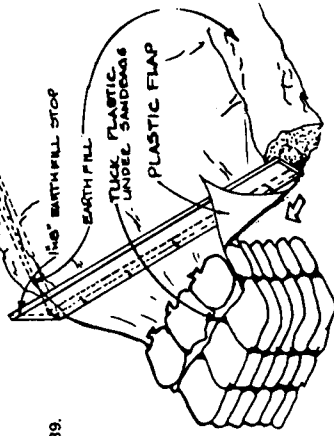
STEP 5

CONSTRUCT ENTRANCE - FILL "SANDBAG PILLOW" WITH EARTH TAKEN FROM THE TRENCH AND STACK TO DIMENSIONS SHOWN AFTER DOORS ARE IN PLACE. PLASTIC OR POLYETHYLENE (WATERPROOFING MATERIAL) ENTRANCE COVER SHOULD BE IN PLACE BEFORE EARTH FILL IS PUT ON THE DOORS.

TOOLS AND MATERIALS

1. TOOLS: PICK, SHOVEL, HAMMER, SAW, SCREWDRIVER, KNIFE, YARDSTICK.
2. SANDBAG PILLOWCASES OR PLASTIC GARBAGE BAGS - AT LEAST 39.
3. LUMBER: 1" x 8" PIECE 7' LONG (OR 20 MORE SANDBAGS) FOR EARTH-FILL STOP AT ENTRANCE EDGE OF DOORS.
4. ROPE OR CORD TO TIE SAND BAGS.
5. DOORS: TWO LAYERS FOR LENGTH OF SHELTER PLUS ONE FOR END CLOSURE. (EXAMPLE: 7 DOORS FOR 3 PERSON SHELTER).
6. NAILS: 8 PERRY (2 1/2" LONG), ABOUT 10 TO NAIL EARTH STOP TO DOOR EDGES AT ENTRANCE.
7. PLASTIC OR POLYETHYLENE (WATERPROOFING MATERIAL) TO COVER DOUBLE LAYER OF DOORS PLUS ENTRANCE.
8. WORK GLOVES FOR EACH WORKER.

ENTRY DETAIL



IF BLDG WALL IS NOT MASONRY - STACK SANDBAGS ON INSIDE OF WALL THE HEIGHT AND WIDTH OF SHELTER.

